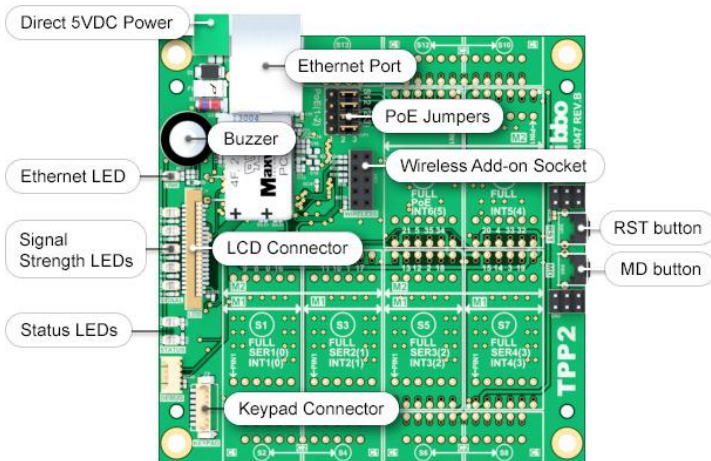


TPS – (Tibbo Project System) IoT platform presentation

Next, We Made BASIC-programmable Tibbo Project PCBs (TPPs)

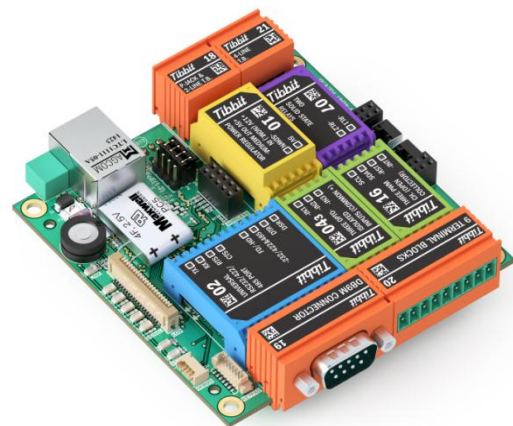


Each TPP can accommodate multiple Tibbit modules and connectors. Only bare essentials are provided on each board: There is a CPU, an Ethernet port, and a very simple power supply. The rest of the board's functionality is defined by what Tibbits you

plug in. There are several TPP "sizes" that differ in the number of Tibbits they can accommodate.

As most Tibbo products, TPPs are programmable in a language called Tibbo BASIC. This easy to learn programming language is particularly suited for control, automation, and networking applications. Tibbo BASIC is complemented by a rich set of programming objects. There are objects for socket (TCP, UDP, HTTP) and serial communications, Wi-Fi, GPRS, file data storage, LCD and keypad control, and many other functions.

[Tibbo BASIC](#) applications are created using our free [Tibbo IDE](#) software (TIDE). This software features a built-in debugger allowing you to upload your Tibbo



TPS – (Tibbo Project System) IoT platform presentation

BASIC application onto the TPP board and cross-debug it through the Ethernet LAN without the aid of any special debugging hardware (such as a JTAG board or an ICE machine).

We Continued With Tibbo Project Box (TPB) Enclosure Kits

Not merely an enclosure for your TPP and Tibbits, a Tibbo Project Box adds an aesthetic touch to your automation projects.

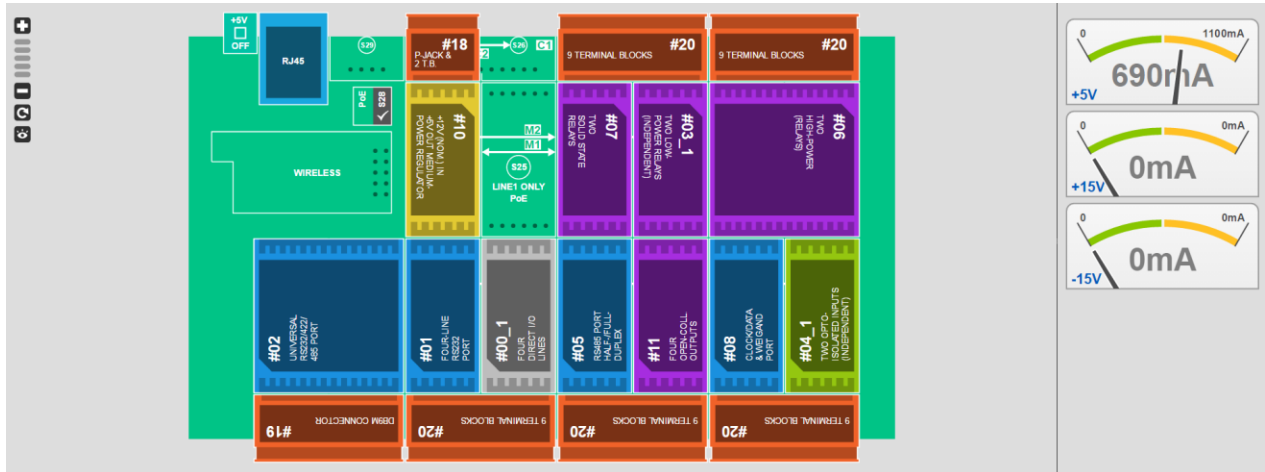
The top and bottom walls of an assembled Project Box are formed by two rows of connector Tibbits installed on a TPP.



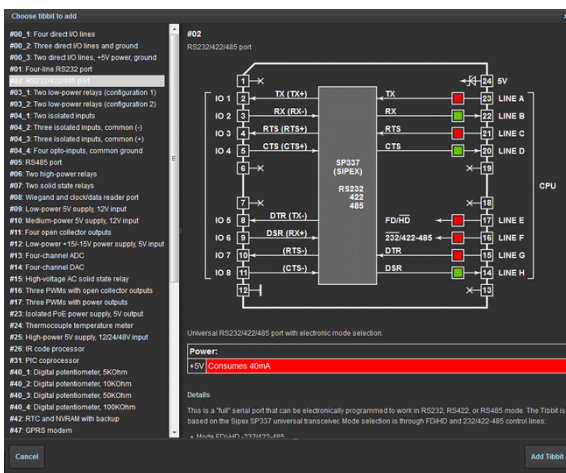
The front cover of the Box is made of translucent plastic that allows you to see the status LEDs of Tibbit modules installed inside. The front panel also accommodates paper inserts similar to those found on office telephones. The inserts are meant for marking wires and ports of your TPS-based automation device.

TPS – (Tibbo Project System) IoT platform presentation

We Topped it All Off With an Online Project Configurator



To aid our users in the evaluation and creation of TPS-based automation products we designed an [online configurator](#). Name your project, select the TPP board, place required Tibbits, and the Configurator will notify you of potential problems and even calculate the projected power consumption. Validated configurations can be immediately ordered at our online store and optionally shared with Tibbo user community.



TPS – (Tibbo Project System) IoT platform presentation

Tibbo IDE (TIDE) 5 Software

Other editors may keep gaining weight and visual clutter with every release, but our [Tibbo IDE \(TIDE\)](#) software for Windows stays light, agile, and pleasing to the eye — all while packing a ton of features. Good things don't need a gig of drive space, folks. Enjoy the right kind of lean!

The screenshot shows the Tibbo IDE (TIDE) 5 Software interface with several callouts highlighting key features:

- Advanced Project Browser:** Slice, dice and analyze your project structure and memory utilization.
- Streamlined Toolbar:** No excess. Only important stuff. Logically presented from left to right.
- Smart Editor:** Remembers where you have been. Helps with where are you going.
- Universal Search Toolbar:** Instant project-wide search. Neatly classified results. Try this -- it is phenomenal!
- Advanced Output Pane:** Colorized and organized output of search and compile results.
- F-key bar:** Function key reminders for ease of use and that nice retro feel.
- Sophisticated Watch:** Differentiates between BASIC and C. Calculates expressions.
- And more...** Other notable TIDE improvements.

The interface includes a File menu, a toolbar with icons for Build, Run, and Debug, a Files pane on the left showing a project tree, a central code editor with C code, an Output pane at the bottom left showing search results, a Watch pane at the bottom center showing variable values, and a Breakpoints pane at the bottom right. The status bar at the bottom shows the current file and line information.

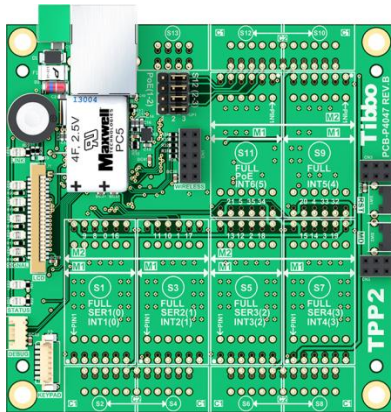
TPS – (Tibbo Project System) IoT platform presentation

Tibbo TPS family devices

TPS2L

Up to 6 [Tibbit](#) Modules, and
up to 6 Tibbit Connectors.

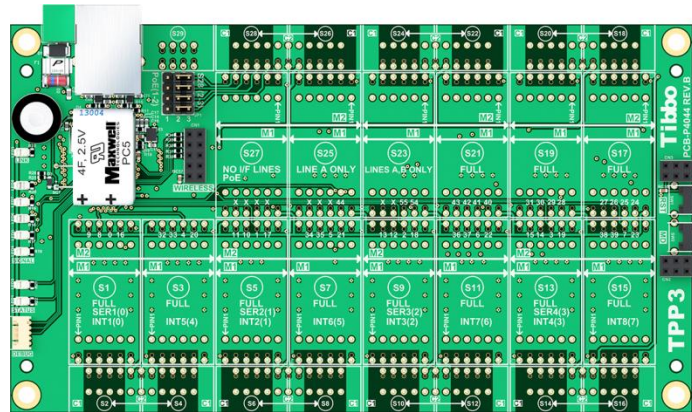
Compatible with [TPB2](#) and
[TPB2L](#) enclosures.



TPS3

Up to 14 [Tibbit](#) Modules, and
up to 14 Tibbit Connectors

Compatible with the [TPB3](#)
enclosure.



TPS – (Tibbo Project System) IoT platform presentation

Useful links:

Tibbo Project System information: <http://tibbo.com/tps>

Access to Online Configurator: <http://tibbo.com/buy/tps/tpc.html>

Tibbo IDE software: <http://tibbo.com/tide>

Tibbo AggreGate: <http://aggregate.tibbo.com/>

Please, visit us:

International Security Expo (Secutech 2016)

Nangang, Taipei, Taiwan, 19-21 April, 2016

Taipei Nangang Exhibition Hall, 4F, Booth #5314



Computex Taipei 2016

Nangang, Taipei, Taiwan, 31 May – 4 June, 2016

Taipei Nangang Exhibition Hall, First Floor, Embedded and Smart Manufacturing Area



Taipei International Automation Industry Exhibition (Automation Show 2016)

Nangang, Taipei, Taiwan, 31 August – 3 September, 2016

Taipei Nangang Exhibition Hal, 4F

